



SHEAR CONNECTORS



PRODUCTION ON MODERN MULTI-STAGE PRESSES ENSURES HIGH QUALITY AT LOW COST.

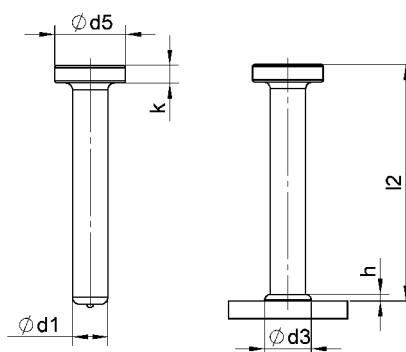
DESIGN SOFTWARE FOR STEEL MOUNTING HARDWARE WITH WELDED SB SHEAR CONNECTORS

Free download: sddesign.bolte.gmbh

DIMENSIONS (mm)

d_1	l_2	d_5	k
10	50-250	19	7,1
13	50-400	25	8
16	50-525	32	8
19	50-525	32	10
22	75-525	35	10
25	75-525	41	12

Material: S235J2+C450



before welding / after welding



CE-CONFORM

Bolte shear connectors are CE-conform. They fulfill all essential requirements of the Construction Products Regulation (Regulation (EC) No. 305/2011/EU).



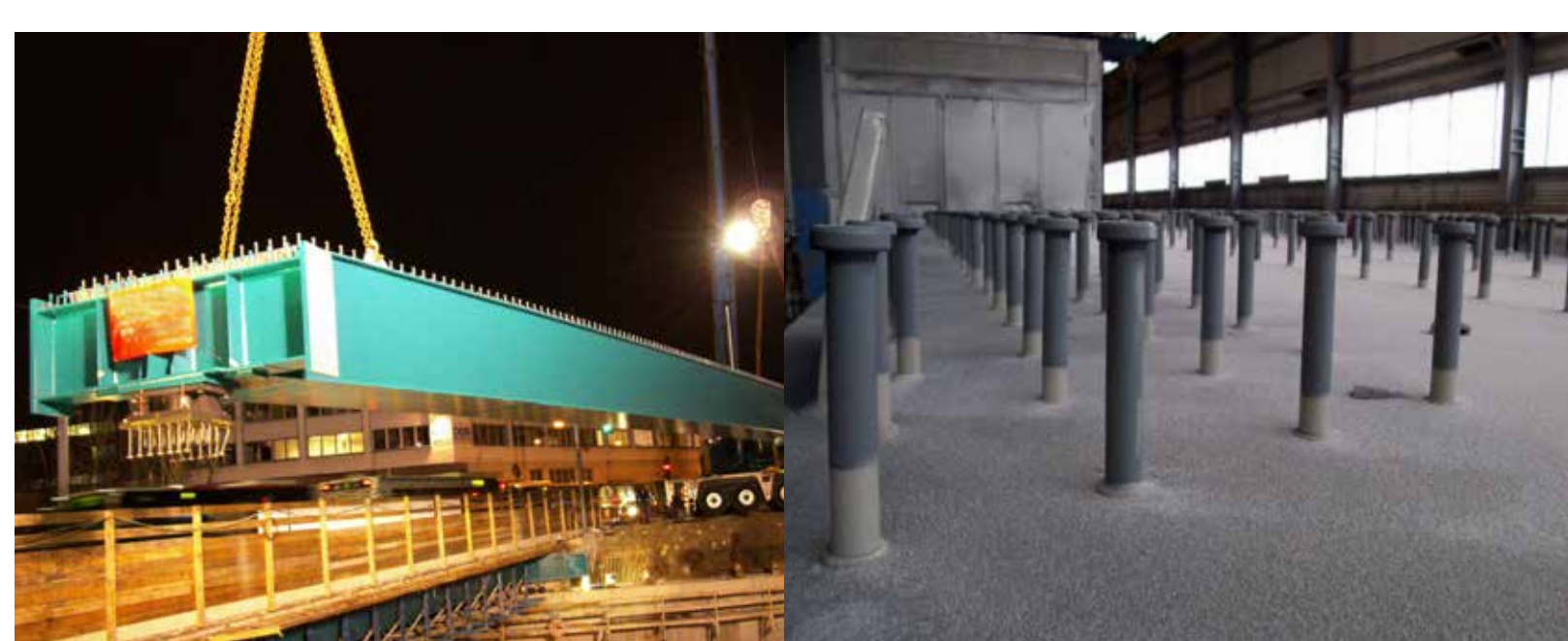
EUROPEAN TECHNICAL ASSESSMENT ETA-11/0120

The European Technical Assessment ETA-11/0120 of the European Organisation for Technical Approvals (EOTA) issued by the German Institute of Civil Engineering (DIBt) is on hand.



MADE IN GERMANY

Bolte shear connectors are made in Germany at our location in Gevelsberg (certified according to DIN EN ISO 9001).





Bolte GmbH

Flurstraße 25
D-58285 Gevelsberg

Tel.: +49 (0)2332 55106-0
Fax: +49 (0)2332 55106-11

Ohmstraße 3
D-85221 Dachau

Tel.: +49 (0)8131 5159-0
Fax: +49 (0)8131 5159-11

E-Mail: info@bolte.gmbh



www.bolte.gmbh